

ADMISSION CLINIC

(CONSULTANCY FOR ADMISSION UNDER MERIT / NRI / MANAGEMENT QUOTA)

We Provide Complete Admission Guidance for Reputed Universities in Maharashtra, Karnataka, Tamilnadu, Pondicherry, Rajasthan, MP, UP, Telangana, AP, Gujrat, Himachal Pradesh, Bihar, Uttarakhand, Kerala



Admission Guidance & Counselling

MD

- RADIOLOGY
- DERMATOLOGY
- PEDIATRICS
- TB & CHEST
- PSYCHIATRY
- ANAESTHESIA
- PATHOLOGY
- GENERAL MEDICINE

MS

- ORTHOPAEDICS
- GYNECOLOGY
- GENERAL SURGERY
- ENT
- OPHTHALMOLOGY

DNB / CPS / FCPS / FELLOWSHIP PROGRAM



CALL/VISIT US FOR MD/MS/DNB/CPS/FCPS/MBBS ADMISSION

8446 500 111 | 8050 021 021

www.admissionclinic.com



Admission Clinic...
We assist you develop your
meaningful career path...



Admission Clinic welcomes all the students to start their career transformation journey and achieve dream goals...



We help you determine where you want your career to go. Utilizing our expertise and experience we provide one-on-one guidance for admission processes that help you take a step ahead to achieve your short- and long-term goals and develop your career.



We dedicate ourselves to humanity's quest for providing assistance to aspirants so that they can get quality and affordable education across various streams and achieve DREAM CAREER.

Eligibility Criteria for admission to MS/MD/PG Diploma/Post MBBS DNB & DNB Diploma (Complete the Internship on or before 30th June 2021)

The NEET PG 2021 cutoff is decided by NBE and varies for different categories. In the previous session, NBE along with MCI and MoHFW reduced the NEET PG cutoff by 20 percentile. Candidates can check NEET 2020 cutoff in the table below.

NEET PG Cutoff Year 2020

Category	Minimum Eligibility Criteria	Cut-off score (out of 1200)	Previous year revised cutoff percentile	Cut-off score (out of 1200)
General Category (UR/EWS)	50th Percentile	366	30th percentile	275
SC/ST/OBC (Including PWD of SC/ST/OBC)	40th Percentile	319	20th percentile	252
UR-PWD	45th Percentile	342	25th percentile	230

Call For Direct Admission MS/MD/PG Diploma

8446 500 111 | 8050 021 021

www.admissionclinic.com

Complete

**Support for
Documentation
as per Merit
NRI /
Management
Quota.**

**Individual
Guidance
at every
stage of
admission.**

“ADMISSION CLINIC”

**We have
excellent study
of infrastructure,
patient flow of
hospital and fee
structure
across India**

**We guide
you to Identify
and take
right decision
during
spot
admission
process.**

NO OF SEAT'S IN ALL INDIA INCLUDING CENTRAL GOVT/ GOVT & PRIVATE / DEEMED UNIVERSITY.

BRANCHES	MD EMERGENCY MEDICINE	MD ANESTHESIA	MD DERMATOLOGY & VENEROLOGY	MD GENERAL MEDICINE	MD PEDIATRICS	MD PATHOLOGY	MD PHARMACOLOGY	MD PSYCHIATRY	MD RADIOLOGY	MD PSM	MD TB & CHEST	MS GYNECOLOGY	MS OPHTHALMOLOGY	MS ENT	MS GENERAL SURGERY	MS ORTHOPEDICS
NO OF SEAT'S	1420	3694	1073	4108	2661	2179	1046	996	1908	1304	718	3038	3038	1196	3696	2189

NO OF SEAT'S FOR POST MBBS DNB

BRANCHES	DNB EMERGENCY MEDICINE	DNB ANESTHESIA	DNB DERMATOLOGY & VENEROLOGY	DNB GENERAL MEDICINE	DNB PEDIATRICS	DNB PATHOLOGY	DNB PSYCHIATRY	DNB RADIOLOGY	DNB TB & CHEST	DNB GYNECOLOGY	DNB OPHTHALMOLOGY	DNB ENT	DNB GENERAL SURGERY	DNB ORTHOPEDICS	DNB FAMILY MEDICINE
NO OF SEAT'S	142	562	15	685	416	103	53	260	84	393	283	88	443	309	103

NO OF SEAT'S IN ALL INDIA DEEMED UNIVERSITY

COLLEGES	MD EMERGENCY MEDICINE	MD ANESTHESIA	MD DERMATOLOGY & VENEROLOGY	MD GENERAL MEDICINE	MD PEDIATRICS	MD PATHOLOGY	MD PHARMACOLOGY	MD PSYCHIATRY	MD RADIOLOGY	MD PSM	MD TB & CHEST	MS GYNECOLOGY	MS OPHTHALMOLOGY	MS ENT	MS GENERAL SURGERY	MS ORTHOPEDICS
D. Y. PATIL MEDICAL COLLEGE, NAVI MUMBAI	3	18	10	24	12	10	5	5	12	2	6	14	8	4	18	15
D. Y. PATIL MEDICAL COLLEGE, PUNE	2	19	11	24	18	14	6	7	16	8	8	17	10	8	24	15
D. Y. PATIL MEDICAL COLLEGE, KOLHAPUR	-	6	1	13	6	6	2	3	7	-	-	7	5	2	10	9
MAHATMA GANDHI MISSIONS MEDICAL COLLEGE, NAVI MUMBAI	5	11	3	14	11	11	4	3	6	2	3	12	4	3	12	11
MAHATMA GANDHI MISSIONS MEDICAL COLLEGE, AURANGABAD	-	5	3	14	6	5	2	3	4	2	3	9	5	3	8	4
BHARATI VIDYAPEETH MEDICAL COLLEGE, PUNE	3	13	4	19	15	12	4	3	15	5	1	8	5	3	10	7
BHARATI VIDYAPEETH MEDICAL COLLEGE, SANGLI	-	4	1	5	6	6	2	3	3	6	-	8	4	3	4	3
DATTA MEGHE INSTITUTE OF MEDICAL SCIENCE, NAGPUR	3	14	4	18	10	12	6	5	10	5	3	15	8	5	16	12
KRISHNA INSTITUTE OF MEDICAL SCIENCES, KARAD	-	10	3	16	8	8	4	-	9	2	-	9	6	2	21	12
PRAVARA MEDICAL COLLEGE, LONI	-	11	-	6	10	5	4	-	5	1	-	12	8	2	9	7
Kasturba Medical College, Manipal Univ., Manipal	3	18	6	24	18	17	8	9	8	8	4	21	6	6	21	15
Kasturba Medical College, Manipal Univ., Mangalore	-	15	1	22	11	13	3	-	-	4	-	10	5	5	10	6
Jawahar Lal Nehru Medical College, KLEU, Belagavi	-	20	5	21	20	13	4	5	15	10	5	19	5	13	18	10
JSS Medical COLLEGE'S, Jagadguru	-	12	7	20	12	14	4	3	10	4	4	8	5	6	16	11
K.S Hegde Medical Academy, Mangaluru	-	16	5	17	9	5	5	5	8	5	2	6	6	8	12	9

NO OF SEAT'S IN ALL INDIA DEEMED UNIVERSITY

COLLEGES	BRANCHES	MD EMERGENCY MEDICINE	MD ANAESTHESIA	MD DERMATOLOGY & VENEROLOGY	MD GENERAL MEDICINE	MD PEDIATRICS	MD PATHOLOGY	MD PHARMACOLOGY	MD PSYCHIATRY	MD RADIOLOGY	MD PSM	MD TB & CHEST	MS GYNECOLOGY	MS OPHTHALMOLOGY	MS ENT	MS GENERAL SURGERY	MS ORTHOPEDICS
Yenepoya Medical College, Mangalore		-	9	4	12	4	10	2	3	7	4	1	6	5	5	10	3
Rajarajeswari Medical College & Hospital, Bangalore		-	7	4	22	14	15	6	5	12	6	5	12	8	8	9	8
SHRI B. M. Patil Med. College B.L.D.E University, Vijayapura		3	14	5	21	10	13	2	2	4	6	2	15	5	5	12	12
Sri Siddhartha Medical College DU, Tumkur		-	4	1	4	4	2	-	2	4	2	-	5	3	3	3	5
SDU Medical College, Kolar		-	12	5	8	7	8	3	2	9	5	-	9	10	8	6	8
SBKS Med. Inst. and Res. Centre, Sumandeep Vidyapeeth, Vadodara		-	15	3	12	12	12	9	3	13	7	4	10	5	3	7	8
Institute of Medical Sciences & SUMH, Bhubaneswar		-	12	3	15	9	6	2	3	7	2	2	9	3	3	13	9
Kalinga Institute of Medical Sciences, Bhubaneswar		-	10	4	10	6	8	2	3	8	6	3	9	4	4	10	7
Sri Ramachandra Med. College & Res. Inst., Chennai		2	20	6	24	12	10	6	4	14	4	6	18	6	8	16	18
SRM Medical College & Hospital, Chennai		-	9	4	15	2	4	4	3	5	4	4	5	3	4	12	5
Chettinad Hospital & Research Institute, Kancheepuram		-	13	5	14	9	3	4	3	6	8	4	9	5	4	16	10
Saveetha Medical College, Chennai		-	12	5	15	9	10	1	4	11	7	3	10	3	5	15	12
Sree Balaji Medical College & Hospital, Chennai		-	10	7	20	12	10	3	2	15	8	6	15	2	3	21	15
Meenakshi Medical College Host. & Res. Inst., Chennai		-	8	3	12	8	5	1	2	7	4	2	3	4	2	15	2
ACS Medical College & Hospital, Chennai		-	-	-	-	-	6	4	-	-	5	-	-	-	-	-	-
VMKV Medical College & Hospital, Salem		2	8	4	7	6	-	2	3	6	-	-	4	5	3	8	8
Shri Sathya Sai Medical College & RI, Kancheepuram		-	9	2	10	6	3	1	-	5	2	2	6	1	3	10	6
Mahatma Gandhi Medical College & RI, Puducherry		-	11	7	16	8	3	3	4	10	4	3	12	6	7	16	12
Aarupadai Veedu Medical College & Hospt., Puducherry		-	8	3	14	10	-	-	3	5	4	-	4	-	3	14	5
Vinayaka Missions Medical College & Hospital, Karaikal		-	4	5	8	5	4	-	2	4	-	-	4	2	3	4	4
Sri Lakshmi Narayana Inst. of Med. Scien., Puducherry		-	-	1	5	-	-	2	2	4	2	-	-	-	1	5	6
Amrita Institute of Medical Science, Kochi		2	11	3	8	4	5	2	3	10	5	2	5	6	4	6	4
M.M. Institute of Medical Sciences & Research, Mullana		-	14	4	19	9	10	3	3	14	5	4	11	4	4	16	9
Hamdard Inst. of Med. Sciences & Research, New Delhi		-	4	-	4	4	3	4	-	3	3	-	4	3	2	4	3
Santosh Medical College & Hospital, Ghaziabad		-	7	2	8	7	4	3	4	-	2	2	4	5	4	10	3

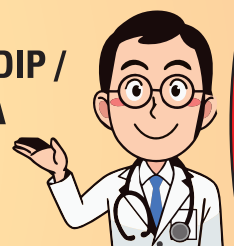
Hello Doctor's

ASSURED ADMISSION PROCESS & GUIDANCE FOR MS / MD / PG-DIP / DNB / CPS / FCPS UNDER MERIT / MANAGEMENT / NRI QUOTA

8446 500 111 | 8050 021 021



ADMISSION CLINIC
Guidance & Counselling



"Trying Is Better Than Crying"

www.admissionclinic.com

COLLEGE'S, BRANCHES & INTAKE IN MAHARASHTRA

COLLEGES	BRANCHES	MD EMERGENCY MEDICINE	MD ANAESTHESIA	MD DERMATOLOGY & VENEROLOGY	MD GENERAL MEDICINE	MD PEDIATRICS	MD PATHOLOGY	MD PHARMACOLOGY	MD PSYCHIATRY	MD RADIOLOGY	MD PSM	MD TB & CHEST	MS GYNECOLOGY	MS OPHTHALMOLOGY	MS ENT	MS GENERAL SURGERY	MS ORTHOPEDICS
N.K.P. Salve Medical College Nagpur		-	8	4	18	8	12	2	5	9	4	5	8	4	5	12	8
DR. V.V.P.F.'S MEDICAL College Ahmednagar		-	4	1	3	4	2	2	-	4	2	-	3	2	-	4	2
V.P.S'S Medical College Nasik		-	4	3	5	3	5	2	3	5	-	2	5	4	3	5	6
Smt.kashibai Navale Medical College Pune		-	21	3	9	6	7	2	3	5	4	2	8	3	3	10	5
MIMER'S Medical College Talegaon Pune		-	-	2	4	-	2	2	-	-	2	-	2	2	-	6	6
MIMSR Medical College Latur		-	4	2	4	4	2	1	-	2	2	-	2	3	1	3	3
Dr. Panjabrao Deshmukh Medical College Amravati		-	3	2	4	-	7	2	2	-	2	1	1	1	-	6	3
K.J.Somaiya Medical College Mumbai		-	-	-	-	2	-	-	-	-	-	-	2	-	-	-	-
SMBT Institute Of Medical Sci. Nandihills Nashik		-	8	2	10	4	-	-	-	3	-	-	3	2	2	5	4
Ashwini Rural Medical College Solapur		-	4	3	7	4	4	-	-	4	-	-	6	3	2	6	5
Dr. Ulhas Patil Medical College Jalgaon		-	4	2	5	2	1	-	2	3	2	2	3	3	2	5	3
B.K.L. Walawalkar Rural Medical College Ratnagiri		-	5	-	8	2	4	-	-	3	4	-	3	-	-	8	4
Acpm Medical College Dhule		-	3	-	4	2	2	-	-	1	-	-	3	1	-	4	4
Bombay Hospital Mumbai		-	1	-	2	2	2	-	-	2	-	-	3	1	-	2	2
Indian Inst. Of Med. Sc.& Research (muslim Minority) Jalna		-	4	2	4	2	4	-	2	-	-	-	3	3	-	4	3
Sancheti Orthopedic Research Institute Pune		MS ORTHOPEDICS - 20															
Swasthiyog Pratishtan Orthopedics Institute Miraj		MS ORTHOPEDICS - 4															
Sanjeevan Medical Foundation Miraj		MS ENT - 3															

Hello Doctor's

ASSURED ADMISSION PROCESS & GUIDANCE FOR MS / MD / PG-DIP / DNB / CPS / FCPS UNDER MERIT / MANAGEMENT / NRI QUOTA

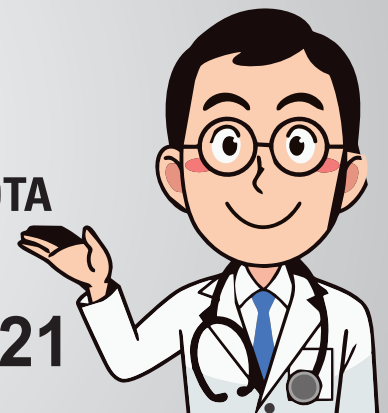
8446 500 111 | 8050 021 021

"Success is Not An Option, It's A Necessary."

www.admissionclinic.com



ADMISSION CLINIC
Guidance & Counselling



COLLEGE'S, BRANCHES & INTAKE IN KARNATAKA

COLLEGES	BRANCHES	MD EMERGENCY MEDICINE	MD ANAESTHESIA	MD DERMATOLOGY & VENEROLOGY	MD GENERAL MEDICINE	MD PEDIATRICS	MD PATHOLOGY	MD PHARMACOLOGY	MD PSYCHIATRY	MD RADIOLOGY	MD PSM	MD TB & CHEST	MS GYNECOLOGY	MS OPHTHALMOLOGY	MS ENT	MS GENERAL SURGERY	MS ORTHOPEDICS
St. John's Medical College Bengaluru, Karnataka		3	14	5	15	9	8	4	5	10	8	-	8	3	3	5	6
M.S.Ramaiah Medical College, Bangalore		4	15	3	20	18	8	4	1	14	4	4	12	4	4	8	12
Kempegowda Institute of Medical Sciences, Bangalore		2	8	5	10	9	7	6	2	6	6	2	7	4	3	10	6
Vydehi Institute of Medical Science & Research Centre, Bangalore		2	9	5	16	10	4	4	3	10	3	3	12	5	4	12	10
Father Muller Institute of Med. Education & Research, Mangalore		-	8	7	11	9	8	5	6	5	-	-	6	2	3	8	9
Jaya Jagadguru Murugarajendra Medical College, Davangere		3	18	10	16	17	22	6	4	15	4	3	21	12	11	14	15
A.J.Institute of Medical Sciences, Mangalore		-	12	3	12	8	5	4	1	8	4	3	6	4	5	12	8
Dr. B.R. Ambedkar Medical College, Bangalore		-	10	4	9	5	5	3	-	4	1	-	6	5	4	7	5
Sri Dharmasthala Manjunatheshwara Medical college, Dharwad (P)		-	9	3	10	8	6	1	3	4	4	-	10	2	3	8	6
Mahadevappa Rampure Medical College, Gulbarga		-	15	5	12	9	10	6	2	15	2	-	9	5	4	10	9
M.V.J. Medical College and Research Hospital, Channasandra, Bangalore		-	7	3	9	10	4	-	4	4	-	-	6	4	2	6	4
Shymanuru Shivashankarappa Institute Of Medical Sciences, Davangere		3	4	3	4	3	4	3	2	4	2	1	3	2	3	2	3
Adichunchanagiri Institute of Medical Sciences, Bellur, Mandya Dist. (P)		-	9	6	10	10	3	3	-	6	2	1	11	5	3	10	10
Navodaya Medical College, Raichur		-	9	3	8	6	6	2	-	4	1	-	9	4	4	6	9
K.Venkataramana Gowda Medical College and Hospital, Sullia		-	4	4	5	6	4	4	2	4	3	-	6	3	2	4	2
-S. Nijalingappa Medical College and Research Centre, Bagalkot		-	9	3	10	7	8	5	3	3	4	-	6	5	4	8	5
Sri Basaveshwara Medical College and Hospital, Chitradurga		-	3	2	4	3	3	-	-	2	3	-	3	3	2	4	2
Al-Ameen Medical College, Bijapur		-	6	-	15	8	2	-	-	6	-	-	-	3	1	10	9
Khaja Bande Navaz Institute Of Medical Sciences, Gulbarga (P)		-	2	1	3	2	4	1	-	2	2	-	1	2	-	2	2
Sapthagiri Institute of Medical Sciences, Bangalore		-	10	2	10	6	2	2	2	5	3	2	6	4	2	8	6
B G S Global Institute of Medical Sciences, Bangalore		-	9	2	5	4	3	4	-	2	4	-	3	2	-	5	3
Srinivas Institute of Medical Science and Research Centre, Mangalore		-	2	2	8	2	2	2	-	4	2	2	6	-	2	10	5
The Oxford Medical College Hospital and Research Center, Bangalore		-	4	3	8	3	3	3	-	3	5	-	3	2	2	5	3
Shridevi Institute of Medical Sciences and Research Hospital, Tumkur		-	4	2	5	3	3	2	2	3	2	2	-	2	2	5	3

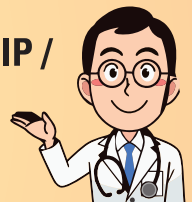


ADMISSION CLINIC
Guidance & Counselling

Hello Doctor's

**ASSURED ADMISSION PROCESS & GUIDANCE FOR MS / MD / PG-DIP /
DNB / CPS / FCPS UNDER MERIT / MANAGEMENT / NRI QUOTA**

8446 500 111 | 8050 021 021



"Do your best and forget about the rest."

www.admissionclinic.com

COLLEGE'S, BRANCHES & INTAKE IN TAMILNADU

COLLEGES	BRANCHES	MD EMERGENCY MEDICINE	MD ANAESTHESIA	MD DERMATOLOGY & VENEREOLOGY	MD GENERAL MEDICINE	MD PEDIATRICS	MD PATHOLOGY	MD PHARMACOLOGY	MD PSYCHIATRY	MD RADIOLOGY	MD PSM	MD TB & CHEST	MS GYNECOLOGY	MS OPHTHALMOLOGY	MS ENT	MS GENERAL SURGERY	MS ORTHOPEDICS
Christian Medical College, Vellore		-	33	5	16	20	8	2	12	12	6	4	17	9	8	10	12
Psg Medical College, Coimbatore		-	4	5	6	6	4	2	4	3	2	2	7	3	2	4	2
Tagore Medical College & Hospital, Chennai		-	-	-	5	-	5	-	-	-	4	-	3	2	-	5	3
Sri Muthukumaran Medical College, Chennai		-	-	-	8	-	-	-	-	-	-	-	3	-	2	-	-
Trichy Srm Medical College Hospital, Trichy		-	6	2	5	4	2	2	2	3	3	2	5	2	2	5	3
Dhanalakshmi Srinivasan Medical College Perambalur		-	7	3	10	4	4	2	2	2	2	2	6	3	2	10	4
Velammal Medical College Hospital, Madurai		-	4	2	3	-	4	2	-	3	2	-	-	2	2	4	3
Karpaga Vinayaga Institute of Medical Sci., Maduranthagam		-	3	1	4	-	2	2	2	3	2	-	2	2	1	4	2
Sree Mookambika Institute of Medical Sci., Kanyakumari		-	2	1	3	2	2	2	-	2	2	-	-	1	1	3	1

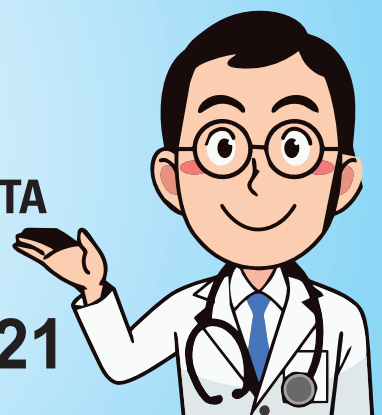
COLLEGE'S, BRANCHES & INTAKE IN RAJASTHAN

GEETANJALI MEDICAL COLLEGE, UDAIPUR	-	10	4	12	8	5	2	3	7	3	4	9	4	2	10	8
NIMS MEDICAL COLLEGE, JAIPUR	-	4	5	7	4	2	2	5	1	2	3	3	3	5	6	2
MAHATMA GANDHI MEDICAL COLLEGE, JAIPUR	2	15	5	23	9	10	4	4	6	3	5	9	5	4	15	9
PACIFIC MEDICAL COLLEGE, Bhilo ka Bedla, UDAIPUR	-	6	1	-	4	-	-	2	4	-	2	3	2	3	5	5
PACIFIC institute of Medical Sci. Umarda, UDAIPUR	-	12	2	10	3	4	-	2	6	-	2	-	2	6	10	6

Hello Doctor's

**ASSURED ADMISSION PROCESS &
GUIDANCE FOR MS / MD / PG-DIP /
DNB / CPS / FCPS
UNDER MERIT / MANAGEMENT / NRI QUOTA**

8446 500 111 | 8050 021 021



"Trying again will lead to success"

www.admissionclinic.com



COLLEGE'S, BRANCHES & INTAKE IN TELANGANA

COLLEGES	BRANCHES	MD EMERGENCY MEDICINE	MD ANAESTHESIA	MD DERMATOLOGY & VENEROLOGY	MD GENERAL MEDICINE	MD PEDIATRICS	MD PATHOLOGY	MD PHARMACOLOGY	MD PSYCHIATRY	MD RADIOLOGY	MD PSM	MD TB & CHEST	MS GYNECOLOGY	MS OPHTHALMOLOGY	MS ENT	MS GENERAL SURGERY	MS ORTHOPEDICS
APOLLO INSTITUTE OF MEDICAL SCIENCE & RESEARCH, HYDERABAD		-	4	-	8	4	-	-	-	5	2	-	-	-	-	4	3
BHASKAR MEDICAL COLLEGE YENKAPALLY		-	6	4	9	3	-	1	2	9	-	3	6	4	3	8	6
CHALMEDA ANAND RAO INSTITUTE OF MEDICAL SCIENCE KARIMNAGAR		-	18	4	12	9	7	3	3	11	4	3	9	4	4	12	8
DECCAN MEDICAL COLLEGE SCIENCE HYDERABAD		-	8	3	6	5	4	2	1	5	2	2	5	3	3	5	3
KAMINENI ACADEMY OF MEDICAL, HYDERABAD		2	8	2	10	5	4	3	-	3	4	2	2	-	-	9	6
KAMINENI INSTITUTE OF MEDICAL SCIENCE NARKETPALLY		2	8	3	10	6	2	4	3	5	3	3	6	3	3	10	7
MALLA REDDY INSTITUTE OF MEDICAL SCIENCE HYDERABAD		-	13	2	12	8	7	-	2	5	4	2	8	3	3	9	6
MALLA REDDY MEDICAL COL. FOR WOMEN'S HYDERABAD		-	10	2	8	4	-	-	2	4	-	2	3	2	1	6	3
MAMATA MEDICAL COLLEGE KHAMMAM		-	8	4	12	8	4	2	4	7	2	4	9	4	4	8	7
MEDICITY INSTITUTE OF MEDICAL SCIENCE CHANPURE, GHANPUR		-	10	5	9	2	2	2	2	5	2	2	6	2	1	4	3
MNR MEDICAL COLLEGE & HOSPITAL SANGAREDDY		-	12	4	12	4	1	2	-	8	2	4	7	4	4	12	5
PRATHIMA INSTITUTE OF MEDICAL SCIENCE KARIMNAGAR		-	19	3	21	12	4	1	2	10	3	3	12	6	2	20	12
SVS MEDICAL COLLEGE MEHBOOBNAGAR		-	15	4	18	7	13	-	3	7	-	3	8	4	3	15	10
SHADAN INSTITUTE OF MEDICAL HOSPITAL PEERAN CHERU		-	4	2	6	4	-	2	-	4	-	2	4	2	3	2	2

COLLEGE'S, BRANCHES & INTAKE IN ANDRA PRADESH

ALLURI SITARAM RAJU MEDICAL SCI ELURU	-	6	6	14	12	5	2	3	13	4	7	12	6	6	13	12
DR PSI MEDICAL COLLEGE CHINOUTPALLI	-	7	5	12	6	5	4	4	6	4	5	8	5	4	12	7
GREAT ESTERN MEDICAL, SRIKAKULAM	-	10	2	12	6	2	2	-	10	2	2	9	2	2	12	8
GLS MEDICAL COLLEGE RAJAHMUNDRY	-	8	4	14	10	6	1	2	7	6	5	8	3	3	14	6
KATURI MEDICAL COLLEGE GUNTUR	-	8	4	10	6	-	2	3	5	5	4	9	4	4	10	8
KONASEEMA INSTITUTE OF MEDICAL AMALAPURAM	-	11	2	8	5	-	1	2	4	2	2	5	-	2	10	6
MAHARAJA COLLEGE, VIZIANAGARAM	-	4	5	15	8	2	2	2	15	2	2	10	3	2	10	8
NARAYANA MEDICAL COLLEGE, NELLORE	2	12	5	18	10	4	3	3	12	3	5	13	6	4	18	15
NRI INSTITUTE OF MEDICAL SCIENCE VISAKHAPATNAM	-	6	2	12	4	4	-	2	2	4	4	6	2	2	6	4
NRI MEDICAL COLLEGE GUNTUR	-	15	5	14	6	4	3	2	12	2	2	5	2	4	14	3
P.E.S. INSTITUTE OF MEDICAL REASERCH, KUPPAM	2	10	4	9	4	6	2	2	5	4	-	11	3	5	12	9
SANTHIRAM MEDICAL COLLEGE, NANDYAL	-	3	4	7	2	2	1	2	4	2	2	3	5	1	4	4
FATHIMA INSTIT OF MEDICAL COLLEGE, KADAPA	-	-	3	8	4	-	-	-	3	-	-	3	-	-	4	-
VISWABHARATHI MEDICAL COLLEGE, KURNOOL	-	4	3	5	3	-	3	3	-	4	2	-	4	3	3	4

COLLEGE'S, BRANCHES & INTAKE IN MADHYA PRADESH

COLLEGES	BRANCHES	MD EMERGENCY MEDICINE	MD ANAESTHESIA	MD DERMATOLOGY & VENEROLOGY	MD GENERAL MEDICINE	MD PEDIATRICS	MD PATHOLOGY	MD PHARMACOLOGY	MD PSYCHIATRY	MD RADIOLOGY	MD PSM	MD TB & CHEST	MS GYNECOLOGY	MS OPHTHALMOLOGY	MS ENT	MS GENERAL SURGERY	MS ORTHOPEDICS
INDEX MEDICAL COLLEGE, INDORE		-	6	4	13	4	12	1	2	7	2	5	10	5	6	15	12
SRI AUROBINDO MEDICAL COLLEGE, INDORE		-	16	5	15	12	6	25	5	10	3	3	12	5	4	15	12
PEOPLE MEDICAL COLLEGE, BHOPAL		-	2	3	4	2	2	2	2	2	4	2	4	1	2	4	1
R D GARDI MEDICAL COLLEGE, UJJAIN		-	3	3	8	4	6	3	2	3	7	3	4	2	2	8	2
CHIRAYU MEDICAL COLLEGE BAIKARH, BHOPAL		-	6	3	8	4	2	2	3	4	4	-	3	2	2	5	4
L.N. MEDICAL COLLEGE & RESEARCH CENTRE, BHOPAL		-	8	2	7	6	5	2	-	4	2	2	6	2	2	10	4

COLLEGE'S, BRANCHES & INTAKE IN UTTAR PRADESH

ERA LUKNOW MEDICAL COLLEGE LAUKNOW		-	7	5	13	8	7	3	3	14	2	4	7	3	4	12	6
HIND INSTITUTE OF MEDICAL SCIENCE BARABANKI		-	-	2	8	3	4	4	-	4	2	-	-	2	2	4	4
MUZAFFARNAGAR MEDICAL COLLEGE, MUZAFFARABAGAR		-	4	3	6	2	10	3	3	4	2	2	6	2	2	6	6
RAMA MEDICAL COLLEGE & HOSPITAL KANPUR		-	-	-	4	-	2	3	-	-	6	-	-	-	-	4	-
F.H. MEDICAL COLLEGE & HOSPITAL, AGRA		-	3	2	5	4	-	-	2	3	-	-	-	2	-	4	3
ROHILKHAND MEDICAL COLLEGE, BAREILLY		-	9	3	4	4	9	4	2	5	6	3	8	3	3	5	6
SARAWATI INSTITUTE OF MEDICAL SCIENCE, HAPUR		-	9	1	10	2	4	2	1	6	2	2	6	-	-	1	4
SCHOOL OF MEDICAL SCIENCE & RESEARCH GREATER NOIDA		-	6	2	10	6	2	2	2	7	2	2	3	2	2	11	6
SHRI RAM MURTI SMARAK INSTITUTE OF MEDICAL SCIENCE BAREILLY		-	6	3	6	6	6	2	3	5	3	-	6	3	3	8	4
SUBHARTI MEDICAL COLLEGE MEERUT		-	10	2	12	3	5	3	3	5	3	2	4	6	2	10	5
TEERTHANKER MAHAVEER MEDICAL COLLEGE, MORADABAD		-	11	4	15	9	8	2	4	12	3	4	10	4	4	16	10
CAREER INSTITUTE OF MEDICAL SCIENCES,		-	4	2	4	2	2	3	3	2	4	2	-	2	2	3	4
RAJSHREE MEDICAL RESEARCH INSTITUTE BAREILLY		-	4	2	6	6	4	4	-	3	-	2	3	2	3	-	3
RAMA MEDICAL COLLEGE CENTRE, HAPUR		-	4	-	10	-	-	-	-	-	-	-	-	-	-	5	-
T.S. MISHRA MEDICAL COLLEGE, LUCKNOW		-	-	-	-	-	3	2	-	-	3	-	-	-	-	-	-
MAYO INSTITUTE OF MEDICAL SCIENCE, BARABANKI		-	3	3	4	2	4	3	-	3	4	2	-	2	3	5	3

“A dream is only a dream until you decide to make it real.”

COLLEGE'S, BRANCHES & INTAKE IN HIMACHAL PRADESH

COLLEGES	BRANCHES	MD EMERGENCY MEDICINE	MD ANAESTHESIA	MD DERMATOLOGY & VENEROLOGY	MD GENERAL MEDICINE	MD PEDIATRICS	MD PATHOLOGY	MD PHARMACOLOGY	MD PSYCHIATRY	MD RADIOLOGY	MD PSM	MD TB & CHEST	MS GYNECOLOGY	MS OPHTHALMOLOGY	MS ENT	MS GENERAL SURGERY	MS ORTHOPEDICS
MAHARISHI MARKANDESHWAR MEDICAL COLLEGE SOLAN.		-	10	3	10	6	5	2	2	7	3	4	9	2	2	10	6

COLLEGE'S, BRANCHES & INTAKE IN UTTARAKHAND

Himalayan Institute of Medical Sciences, Dehradun	-	8	1	15	13	8	3	1	6	3	2	6	4	4	15	6
Shri Guru Ram Rai Institute of Medical, Dehradun	-	8	3	11	6	9	2	3	5	6	2	6	4	3	10	7

COLLEGE'S, BRANCHES & INTAKE IN BIHAR

Mata Gujri Memorial Medical College, Kishanganj	-	6	3	10	5	8	2	-	6	2	-	10	9	4	10	6
Narayan Medical College & Hospital, Sasaram	-	8	-	8	4	8	4	-	5	-	-	4	2	2	8	4
Katihar Medical College, Katihar	-	4	2	5	6	4	-	1	3	3	-	5	2	1	4	4

COLLEGE'S, BRANCHES & INTAKE IN PONDICHERRY

SRI VENKATESWARAA MEDICAL COLLEGE, PONDICHERRY	-	-	4	11	-	2	4	-	5	2	-	4	3	1	10	3
PIMS MEDICAL COLLEGE, PONDICHERRY	-	6	3	4	3	3	2	3	4	4	1	3	3	2	6	2
SRI MANAKULA VINAYAGAR MEDICAL COLLEGE, PONDICHERRY	-	6	4	10	6	6	4	3	4	3	2	-	4	2	5	4

TO KNOW ADMISSION PROCEDURE FOR DNB COUNSELLING ELIGIBILITY & SEAT'S



DOCUMENTS REQUIRED



DNB COUNSELLING ROUNDS



DNB BEST HOSPITAL IN INDIA



COUNSELLING SEAT'S PROCEDURE



SCAN ME



ADMISSION CLINIC

8050 021 021
8446 500 111

CPS/FCPS

(MCI-Recognised & Non-Recognised) courses

We provide complete guidance for CPS/FCPS (MCI-Recognised & Non-Recognised) courses under merit and institutional quota.

College of Physicians & Surgeons (CPS) of Mumbai is an examining body established in 1912 . CPS is one of the oldest Post Graduate Medical educational institution in India empowered to confer qualifications (LCPS, MCPS, Diplomas, FCPS) by Indian Medical Degree Act 1916. CPS is an autonomous body governed constitution

CPS/FCPS ELIGIBILITY CRITERIA:

- A candidate, who has passed final M.B.B.S., or equivalent, examination from a medical college recognized by the Medical Council of India.
- A candidate who has completed one-year compulsory internship before 30 June 2021. University Internship Completion Certificate is mandatory
- A candidate, who has appeared for NEET-PG 2021 However, only NEET PG 2021 qualified candidates shall be eligible for CPS courses recognised by Government of India under section 11(2) of MCI act 1956. Please visit the website of medical council of India to see the list of recognised courses
- Permanent registration certificate from State Medical Council The “Foreign Medical Graduates” shall have successfully cleared the qualifying exam or eligibility test conducted by NBE, New Delhi.
- Reservation criteria is applicable to all the aided institutions as per the applicable laws/rules prevailing in the respective

Diploma courses (Two years)

Title	Course Name
DOMS	Diploma in Ophthalmic Medicine & Surgery
DGO	Diploma in Gynaecology and Obstetrics
DCH	Diploma in Child Health
DPB	Diploma in Pathology and Bacteriology
DDV	Diploma in Dermatology and Venereology
DA	Diploma in Anaesthesia
DORL	Diploma in Ot-Rhino -Laryngology (E.N.T.)
DORTHO	Diploma in Orthopaedics
DPM	Diploma in Psychological Medicine
DMRE	Diploma in Medical Radiology & Electrology
TDD	Diploma in Tuberculous Diseases
DTM	Diploma in Transfusion Medicine
DTMH	Diploma in Tropical, Medicine & Health

Fellowship Courses (Three Year)

Title	Course Name
FCPS(MED)	FCPS in Medicine
FCPS(SURG)	FCPS in Surgery
FCPS(OBGY)	FCPS in Midwifery and Gynaecology
FCPS(OPTHL)	FCPS in Ophthalmology
FCPS(CH)	FCPS in Child Health
Title	Course Name
FCPS(DERMT)	FCPS in Dermatology
FCPS(ORL)	FCPS in Oto- Rhino-Laryngology (ENT)
FCPS(ORTHO)	FCPS in Orthopaedics
FCPS(ANAESTH)	FCPS in Anaesthesia
FCPS(PATHO)	FCPS in Pathology



ADMISSION CLINIC

Admission Clinic

LATEST ALERTS FOR

CPS/FCPS



WhatsApp 'CPS 2021' to
8050 021 021



ADMISSION CLINIC

www.admissionclinic.com

ONE STOP SOLUTION FOR ALL STATE NEET PG COUNSELLING



Hello Doctor's

ASSURED ADMISSION PROCESS & GUIDANCE FOR MS / MD / PG-DIP /
DNB / CPS / FCPS UNDER MERIT/MANAGEMENT/NRI QUOTA

8446 500 111 | 8050 021 021

www.admissionclinic.com



ADMISSION CLINIC

ADMISSION CLINIC

Expected Fees Structure for Management/NRI Quota

(* Information below is Strictly based on the 2020 data)

COURSES	FEES STRUCTURE PER YEAR
MD RADIOLOGY	30 Lacs Onwards
MD GENERAL MEDICINE	30 Lacs Onwards
MD DERMATOLOGY	30 Lacs Onwards
MD PEDIATRICS	30 Lacs Onwards
MD TB & CHEST	25 Lacs Onwards
MD PSYCHIATRY	20 Lacs Onwards
MD ANAESTHESIA	15 Lacs Onwards
MD PATHOLOGY	10 Lacs Onwards

COURSES	FEES STRUCTURE PER YEAR
MS ORTHOPEDICS	30 Lacs Onwards
MS GYNECOLOGY	30 Lacs Onwards
MS GENERAL SURGERY	30 Lacs Onwards
MS ENT	20 Lacs Onwards
MS OPHTHALMOLOGY	30 Lacs Onwards



"ADMISSION CLINIC"

**Gives you a realistic
& reasonable recommendation**

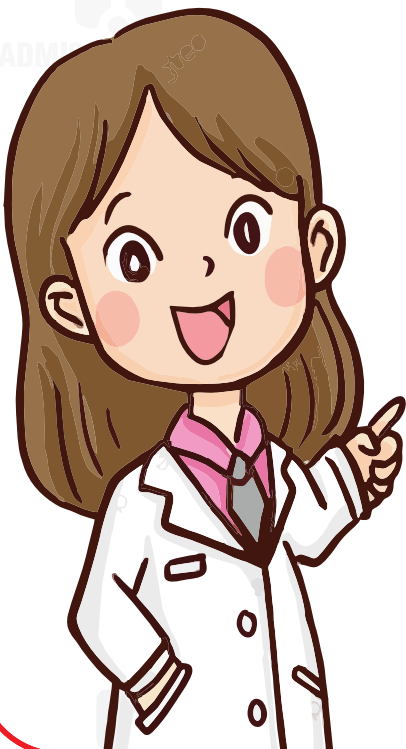
How Can I Get
NRI Seat in **premium**
Institutes of India ?

**REGISTER
NOW**

ADMISSION CLINIC

8050 021 021 | 8446 500 111

www.admissionclinic.com





ADMISSION CLINIC

(CONSULTANCY FOR ADMISSION UNDER MERIT / NRI / MANAGEMENT QUOTA)

ENQUIRY FORM

Expected NEET Score

NEET PERCENTILE

ALL INDIA RANK

STATE MERIT RANK

CHOICE

MS MD PG-DIPLOMA CPS/FCPS DNB DNB Diploma

State Preference

Maharashtra Karnataka Tamilnadu Pondicherry MP

Gujarat Rajasthan UP Others _____

Branch Preference

1 _____ 2 _____ 3 _____ 4 _____ 5 _____

6 _____ 7 _____ 8 _____ 9 _____ 10 _____

**BOOK YOUR
FREE COUNSELLING
SESSION WITH
ADMISSION
CLINIC EXPERT**

**Fill The Enquiry Form
& Share it on Whatsapp**



9890479718 / 9922000222

SCAN ME





ADMISSION CLINIC ASSISTANCE



BRANCH-PREFERENCE

We offer all available opportunities in preferred Branch will be our priority. Our students won't ever "miss the boat" because our team derives various solutions in the fastest way possible.



BUDGET

We do care about the registered student's financial background. So, we have all the up-to-date data about the fee structures of most Colleges and Universities. As our registration fees are nominal and reasonable so you just have to sit and relax.



PLACE

We can understand that there can be plenty of reasons behind the choice of place to study, that is why, we cover most of the states and UT's and provide various options that too in lowest budget available.



ANALYSIS

As the NEET score and Rank is with us, our team does the detail analysis and provides the best suitable College that to in budget.



COUNSELLING

We ease your biggest doubts with personalized Counselling from our Experts



COMMITMENT

OUR COMMITMENT IS WHAT TRANSFORMS PROMISE INTO A REALITY

MUMBAI :

Admission Clinic : 1003 , 10th Floor Kailas Corporate Lounge, Veer Savarkar Road , Vikhroli (WEST), Mumbai - 400079. **Mobile : 9922000222 / 9890479718**

PUNE :

F15 1st Floor Shanti Kunj, Sadhu Vaswani Road, Agarkar Nagar, Opposite GPO Pune - 411001. **Mobile : 9890479718 / 9922000222**

MANGALORE :

Trinity Commercial Complex, Next to Railway Station, Mangalore. **Mobile : 8237284126**

AKOLA :

Swanand Apt., Line No.2, Tapadia Nagar, Akola - 444002. **Mobile : 9372088088**

For Appointment : 9922000222 / 9890479718

www.admissionclinic.com